



1936 Chevrolet Suburban

2 Door and Rear Door

MODEL: Suburban Carryall **MODEL NUMBER:** Series FB

BODY STYLE: 2 DR Half-Ton 6 Passenger Window Truck

WB: 112"

ENGINE: 207-cid OHV inline 6-cylinder; 79HP @ 3200 rpm; 155 lb. ft. of torque; Bore/Stroke: 3-5/16x4"; Carter single barrel carburetor

TRANSMISSION: Manual Synchronesh; 3 forward, one reverse; with floor shift

DRIVE AXLE: RWD, Semi-floating; **RATIO:** 4/11:1

SUSPENSION: Straight front axle, live rear axle; semi-elliptic leaf springs; hydraulic four-wheel braking

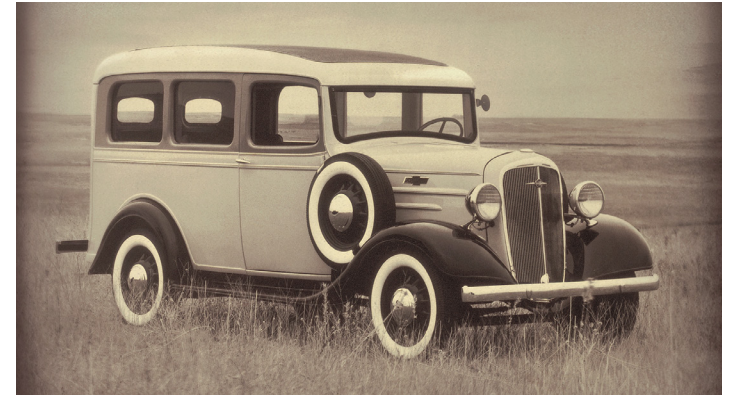
FRAME: Steel ladder type

TIRE / WHEELS: 5.50x17, Short spoke steel

ELECTRICAL: 6-volt with generator; electric start

COLOR: Beige with Black Fenders, Running Boards

BASE PRICE: \$685



In 1936, Chevrolet invented the SUV – and the station wagon as well. The origins of the station wagon were similar to those of the suburban. The first models were built on a car chassis with a wooden rear section. This created the extra space needed to accommodate several passengers and their luggage when they were picked up from the station – consequently “station wagon”.

When the roads were still dusty and cars were loud and slow, the railway was the most popular means of transport for long distances. The arriving passengers then wanted to continue their journey in comfort, with their luggage, perhaps to one of the city suburbs. Consequently, in the early days of the motor car, a species vehicle was developed to satisfy this need: An open, engine-driven carriage with an additional platform for the luggage. People called them “suburbans”. The Chevrolet Suburban Carryall was designed to carry people in a truck-type vehicle in a comfortable manner. And with options such as whitewall tires, a radio and heater, the Carryall was a hunter’s dream come true.