



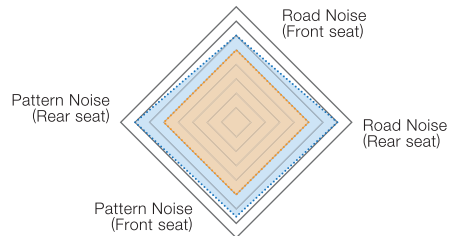
Dramatic
Silence.

ADVAN
dB V552

The tyre is more silent than ever.

ADVAN dB creates breathtaking silence and brings you a sense of tension beyond comfort.

◆ V552 ◆ V551



Sophisticated Pattern design with precision.

Detailed pattern design subdivided into 144 suppresses the occurrence of noise.

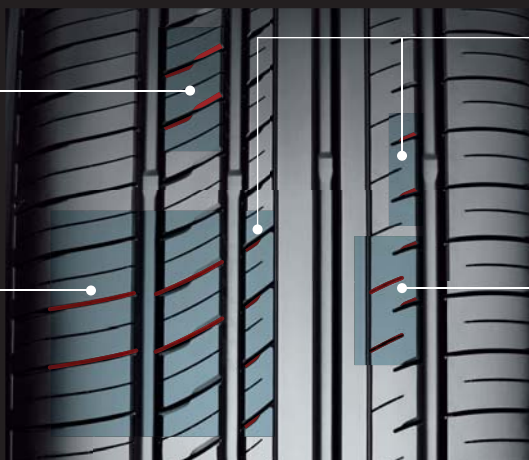
Chamfering applied everywhere optimizes block rigidity and suppresses uneven wear, so quietness at the time of brand new will last for a long time.

Twist edge chamfering

Control the block rigidity by chamfering the edge part of the block into a twisted shape. And even when it is attached to the driver's seat side, even when it is attached to the passenger's seat side, it is effective for suppressing uneven wear.

Precise groove arrangement

The grooves which look like one connection are actually shifted in millimeters. By shifting the timing of grounding, the generated noise is dispersed. It prevents you from concentrating on a specific frequency band and reduces harsh noise.



Single edge chamfering

By partially applying precise chamfering, we control the occurrence of uneven wear and suppress deterioration of quietness.

Staggered arrangement of grooves and sipes

Optimize the rigidity of the block by placing non-penetrating grooves and sipes at precise intervals from the left and right. It improves steering stability and improves silent performance.

Adopted high-quality parts and materials luxuriously. Redesigned silent tyre structure.

Silent base compound

Optimize the gauge for each size.
Improve quietness by suppressing vibration.

Silent belt structure

Wide-belt & Belt edge cover

Adopted a wider belt than a general tyre. Furthermore, Belt-edge cover enhances the rigidity of the end of the belt. Control vibration of the shoulder part.

New dB compound

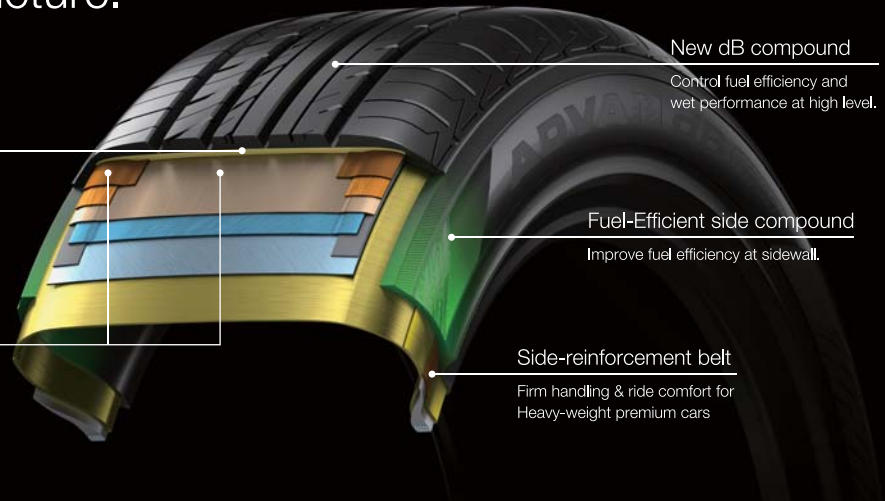
Control fuel efficiency and wet performance at high level.

Fuel-Efficient side compound

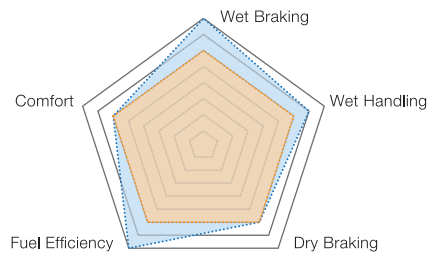
Improve fuel efficiency at sidewall.

Side-reinforcement belt

Firm handling & ride comfort for Heavy-weight premium cars



Not just silent. Definitely evolved safety and Fuel-Efficiency.



Pattern No.

V552/V552A

Inch	Aspect ratio	Size	XL
20	40	◆245/40R20 99W	XL
19	40	◆245/40R19 98W	XL
	45	◆245/45R19 98Y	
18	35	265/35R18 97W	
	40	◆225/40R18 92W	XL
	40	245/40R18 93Y	
	40	◆255/40R18 95W	
	45	◆215/45R18 89W	
	45	225/45R18 91W	
	45	◆235/45R18 94W	
	45	◆245/45R18 96W	
	50	235/50R18 97W	
	50	◆245/50R18 100W	
17	55	◆225/55R18 98V	
	45	◆205/45R17 88W	XL

Inch	Aspect ratio	Size	XL
17	45	215/45R17 91W	XL
	45	225/45R17 91W	
	45	◆245/45R17 95W	
	50	215/50R17 95V	XL
	50	225/50R17 94W	
	50	◆235/50R17 96V	
	55	215/55R17 94W	
	55	225/55R17 97W	
	55	◆235/55R17 99V	
	60	◆215/60R17 96H	
16	60	◆225/60R17 99H	
	55	195/55R16 87V	
	55	205/55R16 91W	
	55	◆215/55R16 93W	
	55	◆225/55R16 95W	

XL = Extra Load ■ = V552A Available size ◆ = Available soon

Inch	Aspect ratio	Size	XL
16	60	205/60R16 92V	
	60	215/60R16 95V	
	60	225/60R16 98W	
	60	◆235/60R16 100W	
	65	◆205/65R16 95H	
	65	◆215/65R16 98H	
15	55	■165/55R15 75V	
	55	195/55R15 85V	
	60	■185/60R15 84H	
	60	195/60R15 88H	
	65	■175/65R15 84H	
	65	■185/65R15 88H	
14	65	195/65R15 91H	
	65	205/65R15 94H	
	65	205/65R15 94H	
	65	■155/65R14 75H	

User Information

- Never mount a tyre on a rim that is damaged or which has been repaired by welding or brazing.
- Never in flate beyond 275kPa (2.75bar,40psi) to seat beads.
- Do not mix different tyre size designations or constructions on the same axle, except for limited use of temporary spare tyres.
- Outer diameter of wheel should be the same as inner diameter of tyre.
- Make sure to follow instructions in the car owner's manual or on the vehicle tyre information placard in the car to maintain proper tyre pressure, particularly for driving on highways and carrying heavy loads.
- Never bleed or reduce air pressure when tyres are hot from driving
- Over-or under-inflation is dangerous and could lead to accidents or tyre damage.
- Check tyre (including spare tyre) inflation pressure at least once a month and before every long trip.
- Stones, gravel and other foreign objects stuck in the tyre treads may damage the tyre. Remove foreign objects from the tyre treads.
- Tyres should be mounted only by professionally trained persons.

Never use a tyre under the following conditions

- If the tread has worn to the treadwear indicator.
- If breaks in the fabric appear.
- If cords or wires are exposed.

Replace the tyres immediately under any of the above conditions.

Storage of steel belted radial tyres:

- Store unmounted tyres indoors in a dry location.
- Never expose unmounted tyres to moisture.

To preserve traffic safety YOKOHAMA recommends driving substantially slower under adverse weather or road conditions.

Construction and specifications are subject to change without notice.



<http://global.yokohamatire.net>

© 2017 by THE YOKOHAMA RUBBER CO., LTD.

CE240
CMC

01